



***XLfit* 5.3**

Installation Guide



Information in this document is subject to change without notice. The software described in this document is furnished under a license agreement or nondisclosure agreement.

The software may be used or copied only in accordance with the terms of those agreements.

All rights reserved. No part of this publication may be reproduced, stored in a retrieval system, or transmitted in any form or any means electronic or mechanical, including photocopying and recording for any purpose other than the purchaser's personal use without the written permission of IDBS.

The names of actual companies and products mentioned in this document may be trademarks of their respective owners.

IDBS accepts no responsibility or liability for any errors or inaccuracies that may appear in this documentation.

Copyright © 2011 IDBS

Date of issue: 17th November 2011

Introduction

This document contains information on the installation of *XLfit*. If you have any problems installing or configuring the software, or have any feedback or comments, please contact your local support office (support@idbs.com) or refer to the [Customer Support Portal](#).

Pre-Installation Tasks

The following pre-installation tasks must be performed before an installation of *XLfit* using the supplied msi installer can take place:

- Ensure that you have applied all of the latest patches to your operating system and any supporting software.
- If not already present, install Microsoft .Net Framework 2.0 Service Release 1 prior to installing *XLfit*. The `dotnetfx.exe` installer can be found on the CD Image in either of the following locations:

`\x86\DotNetFX\dotnetfx.exe`

`\x64\dotnetfx\dotnetfx.exe`

- If you use the `setup.exe` to install *XLfit* all pre-requisites will be automatically installed.
- If not already present, install Microsoft Office 2003, 2007 or 2010.

Client Upgrade

Previous versions of *XLfit* must be manually uninstalled prior to installing *XLfit* 5. Once this is complete the upgrade process is identical to the new install process below.

Installation Process

New Install of *XLfit* 64-bit

To install the *XLfit* software for use with Microsoft Excel 2010 64-bit, run `setup.exe` from the x64 folder and follow the on-screen instructions.

64-bit Installation Notes

1. The 64-bit version of *XLfit* is only supported for standalone installations of *XLfit*. If you are using any other IDBS products on the machine you should install the 32-bit version to ensure all products continue to work correctly.
2. The installation must be run by a user who has Administrator privileges on the machine.

New Install of XLfit 32-bit

To install the XLfit software, for use with 32-bit versions of Microsoft Excel, run `setup.exe` from the `x86` folder and follow the on-screen instructions.

32-bit Installation Notes

1. The 32-bit version of XLfit supports Excel versions 2003, 2007 and 2010 and is compatible with all other IDBS software as defined in the platform support document.
2. The installation must be run by a user who has Administrator privileges on the machine.

Typical Installation

The default setup type is **Typical** which will install all features required for standard XLfit use.

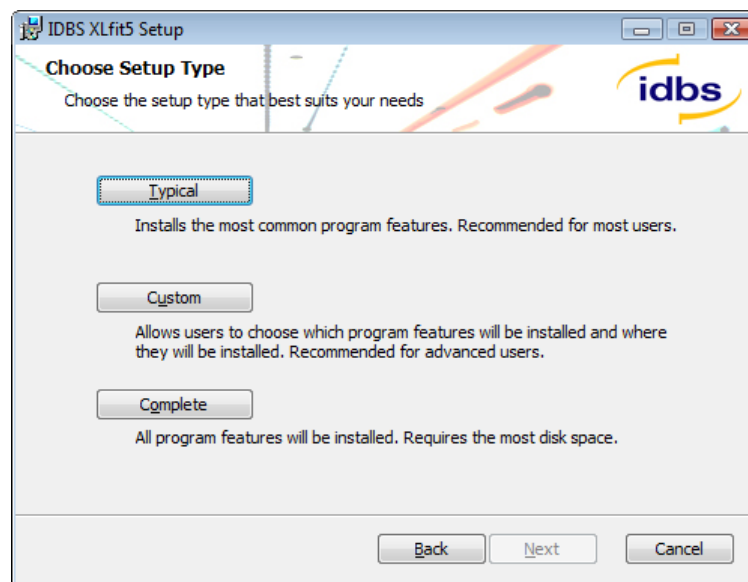
Complete Installation

The Complete installation will install all program features. In addition to XLfit, this option installs the following support features:

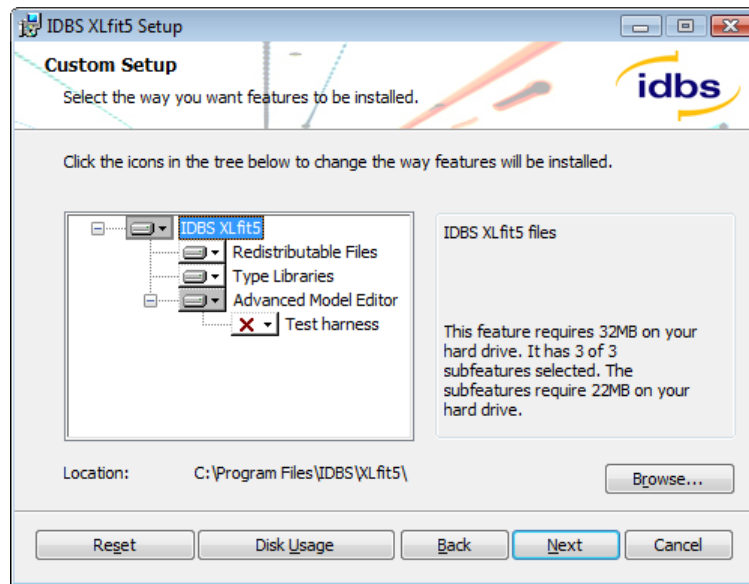
- XLfit Type Libraries - Provides backwards compatibility with previous XLfit 4 versions.

Custom Installation

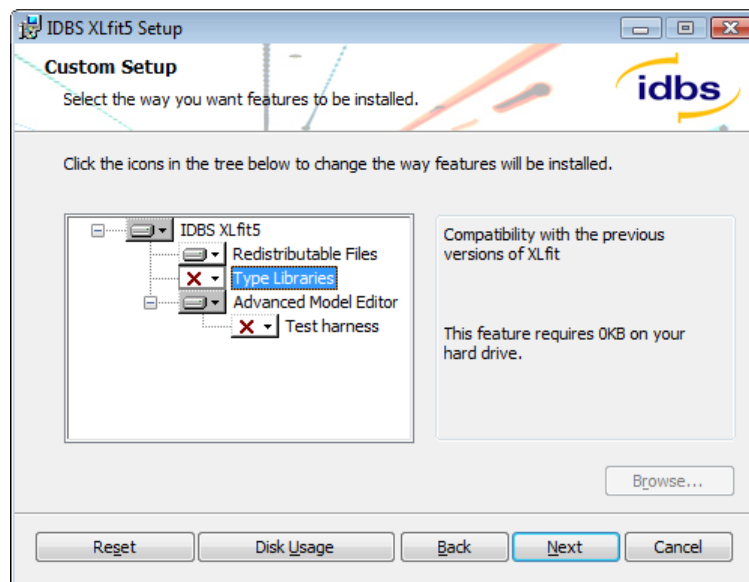
Select the **Custom** setup type to exclude the support features from the installation. This may be chosen when no previous version of XLfit has been installed and no maintenance of existing XLfit workbooks is required.



Click **Next** and the Custom setup screen will be displayed (note: the 32-bit installer is shown below, the 64-bit installer will have an additional option to install 64-bit MS Office support):



To exclude a program feature from the installation, click the relevant drop-down menu and select, 'Entire feature will be unavailable'. A red cross will appear next to all excluded options. For example:



MSI Installation

XLfit provides an MSI package for installation. This enables you to remotely deploy *XLfit* to a number of client PCs.

The installer can be initialised from the command line by using the following command, substituting the correct path to the file "IDBS XLfit5.msi":

```
msiexec /i "c:\IDBS XLfit5.msi"
```

This can also be run silently if required by issuing the following command:

```
msiexec /i "c:\IDBS XLfit5.msi" /qn
```

The installation location for the 32-bit components can be configured by adding the following argument to the command:

INSTALLDIR = <path to installation directory>

e.g., msixec /i "c:\IDBS XLfit5.msi" INSTALLDIR = "C:\Apps\XLFitTest" /qn

In the 64-bit installer, the installation location for the 64-bit components can also be configured by adding the following argument to the command:

XLFIT64 = <path to installation directory>

e.g., msixec /i "c:\IDBS XLfit5.msi" INSTALLDIR = "C:\Apps32\XLFitTest"
XLFIT64="C:\Apps64\XLFitTest" /qn

The 64-bit path must be different to the 32-bit path.

Possible Installation Problems

If the user does not have a full installation of Microsoft Excel installed on their computer, they may be prompted for the Excel disk. This allows Excel to install additional components that are required in order to run add-ins and other extended functionality.

ActivityBase Compatibility

If you are using a version of ActivityBase 7 prior to version 7.4.3 you will need to install the MathIQ compatibility patch on all machines to be able to view graphical results using the new charting features. The msi installer is included on the CD image at the following location

\Redistribution\MathIQ Compatibility Patch\ActivityBase 7.x\MathIQv3.msi

Licensing

When you install the trial version of *XLfit* without entering a license key code, you will have full access to *XLfit* for 30 days. You may register *XLfit* at any time during this 30-day period to upgrade to a full license. To register please send an email to registration@idbs.com.

IDBS has introduced the following types of product licensing options in order to enable you to register *XLfit*.

- A seat-based license that is unique to each computer on which *XLfit* is installed.
- A site license that covers all installations of *XLfit* within a company or organisation.