



---

*XLfit 5*  
Installation Guide

---



Information in this document is subject to change without notice. The software described in this document is furnished under a license agreement or nondisclosure agreement.

The software may be used or copied only in accordance with the terms of those agreements.

All rights reserved. No part of this publication may be reproduced, stored in a retrieval system, or transmitted in any form or any means electronic or mechanical, including photocopying and recording for any purpose other than the purchaser's personal use without the written permission of IDBS.

The names of actual companies and products mentioned in this document may be trademarks of their respective owners.

IDBS accepts no responsibility or liability for any errors or inaccuracies that may appear in this documentation.

Copyright © 2009 IDBS

Date of issue: 30<sup>th</sup> November 2009

# Introduction

This document contains information on the installation of *XLfit*. If you have any problems installing or configuring the software, or have any feedback or comments, please contact your local support office ([support@idbs.com](mailto:support@idbs.com)) or refer to the IDBS customer website at <http://www.idbssupport.com/sw/selfservice/>.

## Pre-Installation Tasks

The following pre-installation tasks must be performed before an installation of *XLfit* can take place:

- Ensure that you have applied all of the latest patches to your operating system and any supporting software.
- If not already present, install Microsoft .Net Framework 2.0 Service Release 1 prior to installing *XLfit*. This can be found on the CD Image in the Redistribution folder. You should install the .Net Framework by running the following:

```
\Redistribution\dotnetfx\dotnetfx.exe
```

- If not already present, install Microsoft Office 2003 or 2007.

## Client Upgrade

Previous versions of *XLfit* must be manually uninstalled prior to installing *XLfit* 5. Once this is complete the upgrade process is identical to the new install process below.

## New Install of *XLfit*

To install the *XLfit* software, run IDBS *XLfit5.msi* from the relevant folder and follow the on-screen instructions. **Note: the installation must be run by a user who has Administrator privileges on the machine.**

If you are using ActivityBase version 7 or above or SARview version 6.1 and above you will need to install the MathIQ compatibility patch on all machines to be able to view graphical results using the new charting features. The msi installer is included on the CD image at the following location

```
\Redistribution\MathIQ Compatibility Patch\ActivityBase 7.x\MathIQv3.msi
```

If you are using ActivityBase version 6.1.3 you will need to copy the Abase.exe.manifest file at the following location to the ActivityBase folder where Abase.exe is installed.

```
\Redistribution\MathIQ Compatibility Patch\ActivityBase  
6.1.3\Abase.exe.manifest
```

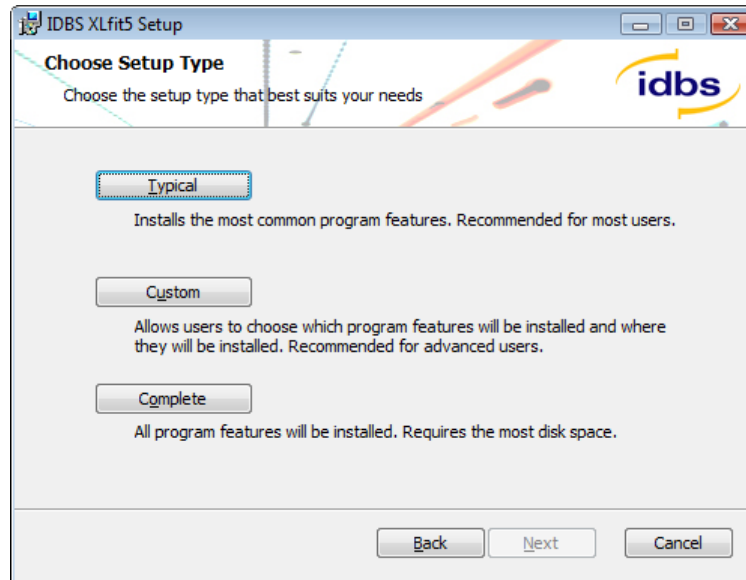
## Complete Installation

The default setup type is **Complete** which will install all program features. In addition to *XLfit*, this option installs the following support features:

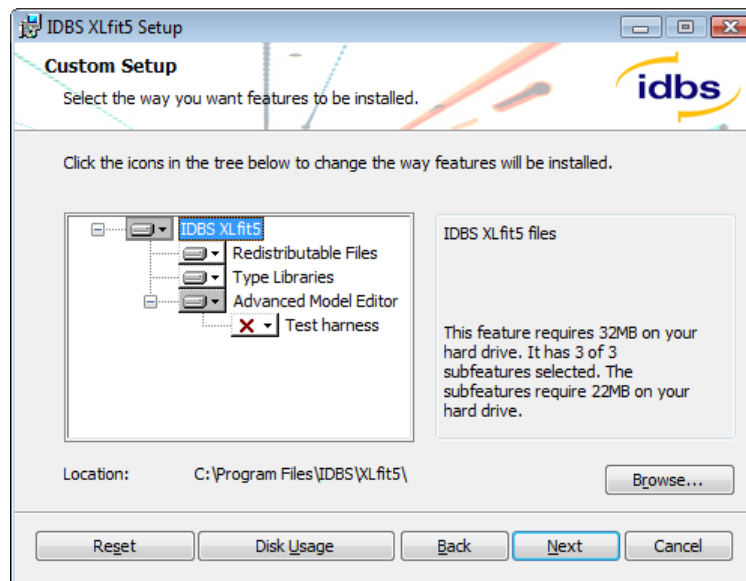
- *XLfit* Type Libraries - Provides backwards compatibility with previous *XLfit* 4 versions.

## Custom Installation

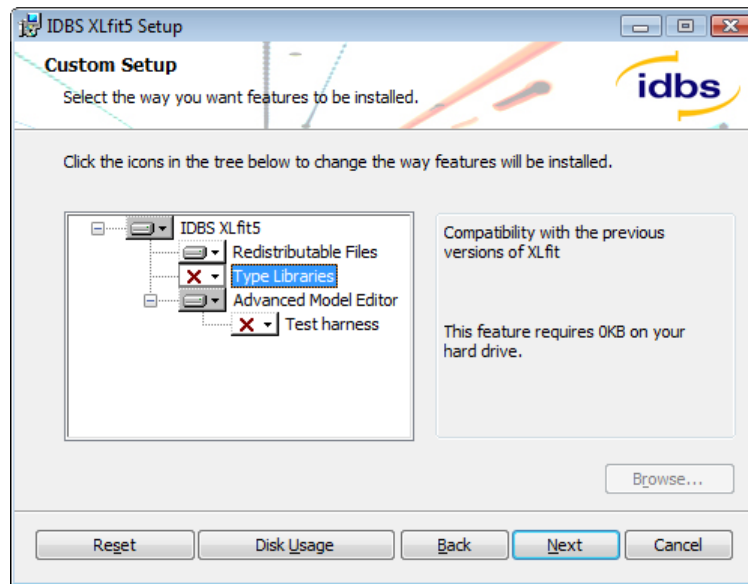
Select the **Custom** setup type to exclude the support features from the installation. This may be chosen when no previous version of *XLfit* has been installed and no maintenance of existing *XLfit* workbooks is required.



Click **Next** and the Custom setup screen will be displayed:



To exclude a program feature from the installation, click the relevant drop-down menu and select, 'Entire feature will be unavailable'. A red cross will appear next to all excluded options. For example:



## Possible Installation Problems

If the user does not have a full installation of Microsoft Excel installed on their computer, they may be prompted for the Excel disk. This allows Excel to install additional components that are required in order to run add-ins and other extended functionality.

## Licensing

When you install the trial version of *XLfit* without entering a license key code, you will have full access to *XLfit* for 30 days. You may register *XLfit* at any time during this 30-day period to upgrade to a full license. To register please send an email to [registration@idbs.com](mailto:registration@idbs.com).

IDBS has introduced the following types of product licensing options in order to enable you to register *XLfit*.

- A seat-based license that is unique to each computer on which *XLfit* is installed.
- A site license that covers all installations of *XLfit* within a company or organisation.

## MSI Installation

*XLfit* provides an MSI package for installation. This enables you to remotely deploy *XLfit* to a number of client PCs.

The installer can be initialised from the command line by using the following command, substituting the correct path to the file "IDBS XLfit5.msi":

```
msiexec /i "c:\IDBS XLfit5.msi"
```

This can also be run silently if required by issuing the following command:

```
msiexec /i "c:\IDBS XLfit5.msi" /qn
```

The installation location can be configured by adding the following argument to the command:

```
INSTALLDIR = <path to installation directory>
e.g., msiexec /i "c:\IDBS XLfit5.msi" /qn
INSTALLDIR = "C:\Apps\SampleApp"
```