

Expanding the power of Excel

XLfit is a powerful curve fitting and data analysis available from within the Microsoft® Excel operating environment. The only application of it's kind, XLfit offers an extensive selection of analysis and calculation tools, including various fit and statistical models, enhanced visualizations and previewing of results - all from within the Excel environment.

XLfit contains a powerful statistical engine which enables users to produce both linear and non-linear curves, smooth results, statistical analysis, weighting to result values and display error bars. This powerful compliment to Microsoft® Excel allows rapid data analysis and crucial fit information for 2D and 3D graphs. Furthermore, plotted data can be easily exported for use in external presentations and documents.

A Better View

The new XLfit desktop gives users a comprehensive view of all potential fits and worksheets available for manipulation and analysis.

Why XLfit ?

- **Excel integration**

The only application of it's kind to provide powerful curve fitting and statistical analysis from within the Microsoft Excel environment

- **Interactive chart types**

Edit charts using easily accessible context-sensitive menus and instantly preview changes before applying them to the worksheet

- **Quality Assured**

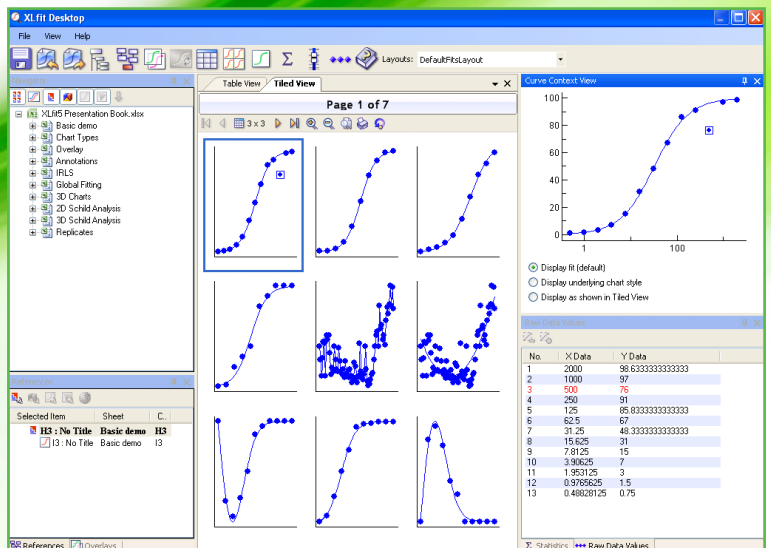
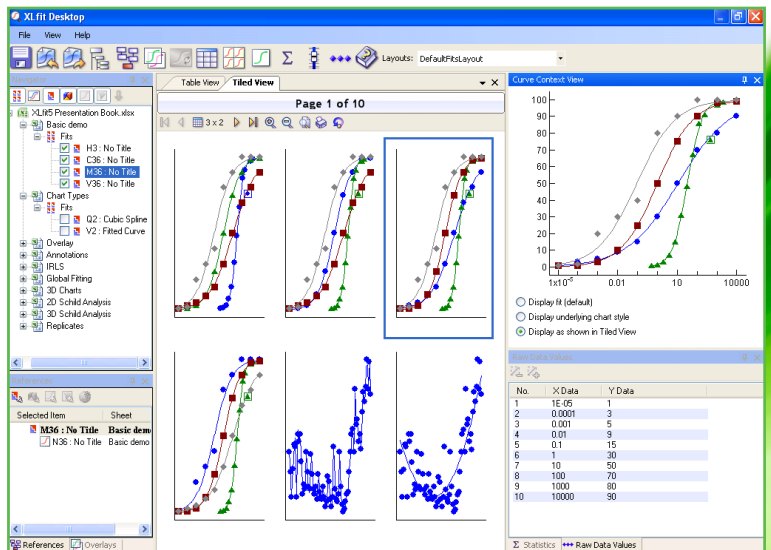
Independent validation by the UK National Physical Laboratory gives users more confidence in their results

- **Complete Mathematical toolbox**

Comprehensive library of models (e.g. PA2) allow rapid result generation, global fitting, automatic outlier rejection, knock in/knock out functionality all included as standard

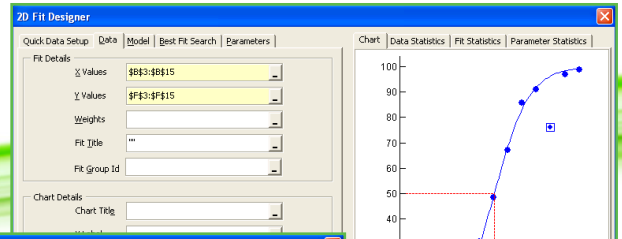
- **Easy Migration**

XLfit ensures backwards compatibility with XLfit version 4, enabling easy individually or batch workbook migration



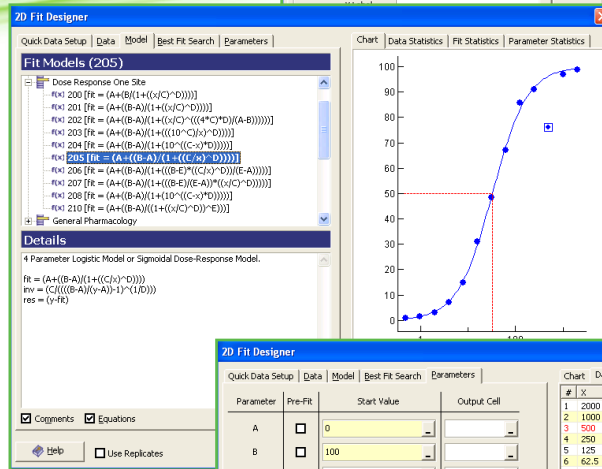
Point-and-click editing

Even inexperienced Excel users will find that they can use XLfit intuitively. Three steps of the XLfit Wizard guide a user through the curve-fitting process from start to finish, while the fully interactive Chart and Fit Designers give you immediate editing access to chart data and display.



Fully interactive preview

With the release of XLfit, the designer interfaces have been redesigned for improved access and ease of use, with a preview pane that allows you to apply or discard chart edits before outputting your charts to the worksheet.



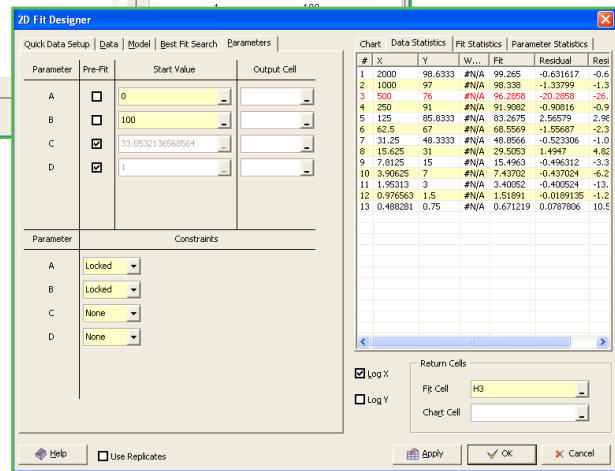
The user experience of working with XLfit also benefits from improvements to both application performance and the upgrade process from previous versions.

Flexible formatting

The new XLfit Chart Designer enables you to customize every aspect of a graph's appearance.

For example, you can modify:

- Chart background and border
- Axis style, scale and origin
- Curve style and color
- Annotation and legend display
- Data point symbols.



Editing control outside Excel

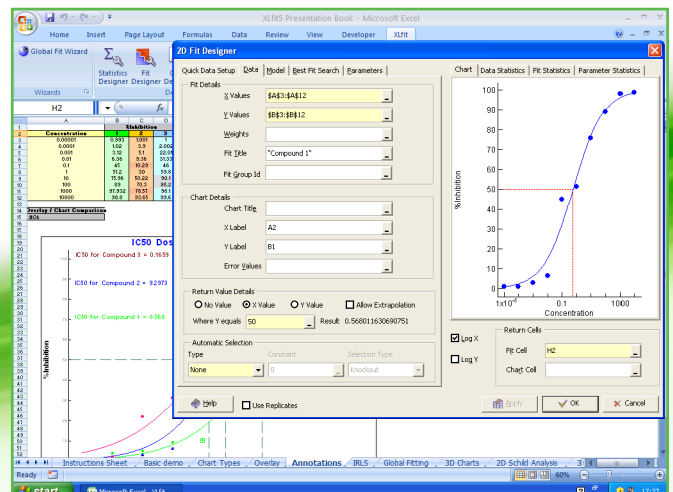
When you copy and paste an XLfit chart into other applications, such as Microsoft Word or PowerPoint, double-clicking the chart in the new application gives you complete access to chart data and display details, which you can change and save within the external application.

Preview as you build

XLfit's Fit Designer makes the process of choosing a curve-fit model and equation for a dataset easier than ever. Instantly visualize data even without applying a model, so you can get a general feel for how the data looks before analyzing it. Then choose from an extensive range of predefined linear and non-linear mathematical models to apply to your data.

XLfit displays descriptions of all models as you select them and a preview of the fit. The Fit Designer lets you see, for example, how changing parameter values, knocking out data points, adding weighting and error bar values, and choosing a model affect the fit as you build it.

In addition to the predefined models in XLfit, you can define your own custom parameters and models. XLfit's best fit searching allows you to search within or across the provided and custom model categories to find the best fit for a dataset.



Superior statistical analysis

The Statistics Designer allows statistical analysis of any fit that you create using XLfit. Apply predefined statistical equations to a fit or add your own customized equations.

Example statistics that XLfit provides include:

- F and T tests
- Area under the curve
- Confidence intervals
- Error values relating to parameter values or any point on the curve.

You can return the results to the worksheet, or add the results as a dynamic annotation to a chart, which updates automatically when the value changes.

In addition to statistics relating to XLfit curves, you can apply XLfit's statistics models to any dataset within the Excel environment. Available calculations include Spearman's Rank Correlations, Student's T-Test, Mann Whitney U-Test, Sum of Squares and ANOVA, among others.

As with fit models, XLfit allows you to create your own custom statistics using the supplied mathematical operators via the Formula Editor.

Global fitting

XLfit's Global Fit Wizard enables you to share parameter values and models across several datasets, so that you can improve the fitting process by using combinations of models to fit data. This is useful when data is sparse or when the results generated only form part of the results.

Pharmacological dose response is an example of when global fitting could help, where under certain circumstances it is not possible to clearly define an upper or lower asymptote. In these cases, control data and data from other dose response can be used to fill in the gaps in order to obtain a best fit.

Complete customization

XLfit allows you to generate new models and statistics and to share them globally. Many industries require graphical representation of data so that decisions can be made more quickly than when just referring to numbers on a page.

As XLfit is fully integrated with Excel, you can create and reapply graphical templates that correspond to your exact style needs, reducing repetitive worksheet formatting.

The image displays several screenshots of the XLfit software interface, illustrating its capabilities in statistical analysis and 3D charting.

2D Fit Designer: This window shows a data table with columns for Model, F-Test p, T-Test p, Chi, and r². It also includes a 'Details' section for a 5 Parameter Logistic Model and a chart showing a sigmoidal fit to data points. The chart has 'Substitution' on the y-axis and 'Concentration' on the x-axis (log scale). A 'Return Cells' dialog is open, showing 'Fit Cell' set to 'H2' and 'Chart Cell' set to 'H3'.

3D Fit Designer: This window shows a 3D chart with 'Amount' on the y-axis and 'Dose' and 'Substance' on the x-axes. It includes a 'Fit Details' section with 'X Values', 'Y Values', 'Z Values', and 'Weights' fields. A 'Return Cells' dialog is also open, showing 'Fit Cell' set to 'H2' and 'Chart Cell' set to 'H3'.

3D Fit Designer (Parameter Table): This window shows a table of parameters and their constraints. The table has columns for Parameter, Pre-Fit, Start Value, and Output Cell.

Parameter	Pre-Fit	Start Value	Output Cell
A	<input type="checkbox"/>	1	
B	<input type="checkbox"/>	1	

Chart 3D Designer: This window shows a 3D chart with a blue surface and red data points. It includes a 'Filter' section and a 'Return Cells' dialog.

Automatic data rejection

XLfit allows you to automatically detect and remove spurious outlying data points using statistical methods such as IRLS, allowing an experiment to proceed directly from set up to review of results.

Automate data analysis and validate data as it becomes available and is imported into the Excel environment.

Simple-to-edit Microsoft Visual Basic® for Applications (VBA) functions give flexibility to users who design templates to customize XLfit functions as required, giving you as much control as necessary when analyzing data.

XLfit can be used to display a wide scope of data types from various industries and is predominantly used in areas where non-linear regression is required.

XLfit provides all of the models that may be used in a widespread number of different industries, with models categorized in XLfit by industry relevance.

User security

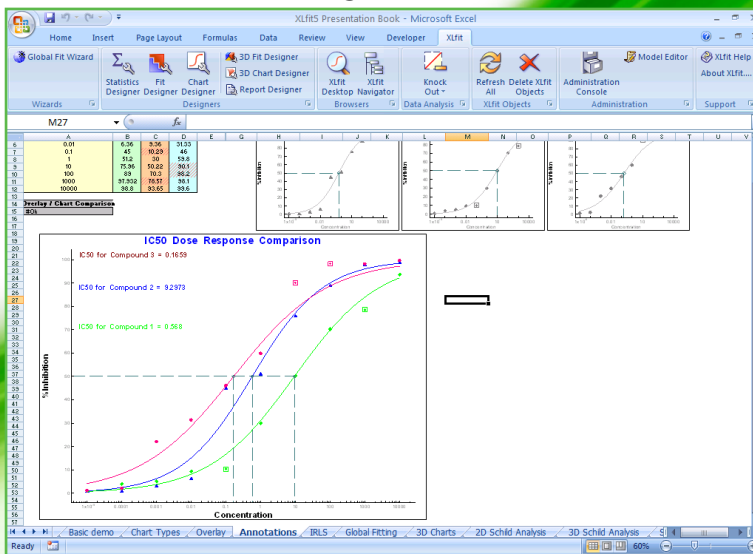
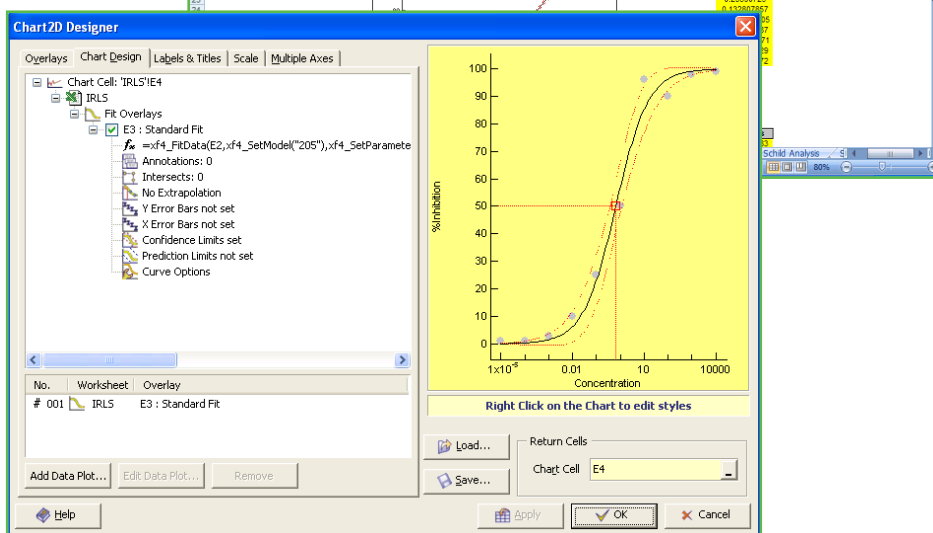
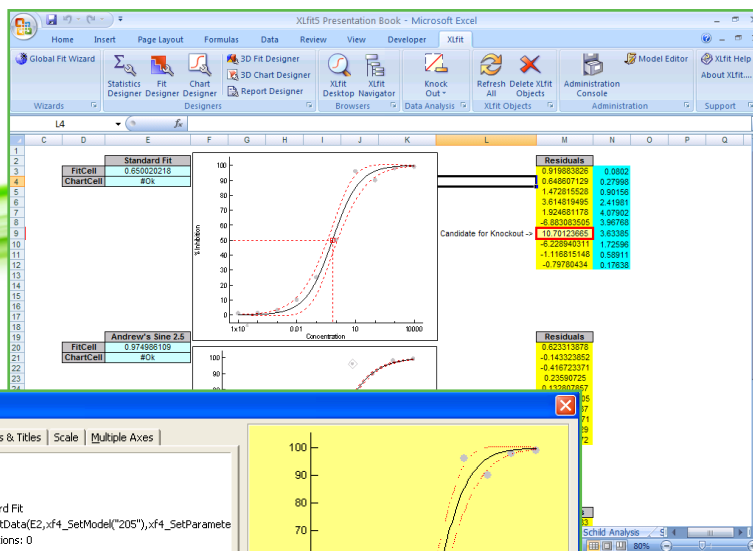
The XLfit Administration Console allows administrators and users to customize XLfit and its behavior using a variety of flexible settings. The ability to control user access to certain features could be used to define an administrative group, if desired, or to standardize the XLfit working environment across an organization.

Administration options include fit settings, such as the number of iterations and convergence limit of a fit, model file network locations, charting options, dialog options, and many more. Because model file location is configurable, you can centrally administer custom formulae and share throughout a company.

Stay in Excel

Stop the hassle of switching back and forth between Excel and your curve-fitting package. Work in Excel and stay in Excel, extending its functionality with XLfit. Build macros (VBA) that include XLfit functions.

Try XLfit today. For a 30-day free trial version, call one of the numbers below or email info@idbs.com.



www.idbs.com
info@idbs.com

Guildford, UK
+44 1483 595000

Alameda, CA
+1 510 814 4900

Bridgewater, NJ
+1 908 429 2900

Burlington, MA
+1 781 272 3355